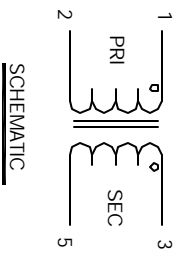


The information contained in this drawing is the sole property of CWS Coil Winding Specialist. Any reproduction in part or whole without written permission of CWS Coil Winding Specialist is prohibited.

REVISION HISTORY

REV	ECN	DESCRIPTION	DATE	BY	DATE
A		PRODUCTION RELEASE	5/19/04	TKK	5/19/04



WHERE SHOWN  
6 MARK PART NUMBER AND REVISION

5 REMOVE INSULATION, SOLDERED TO LEADS

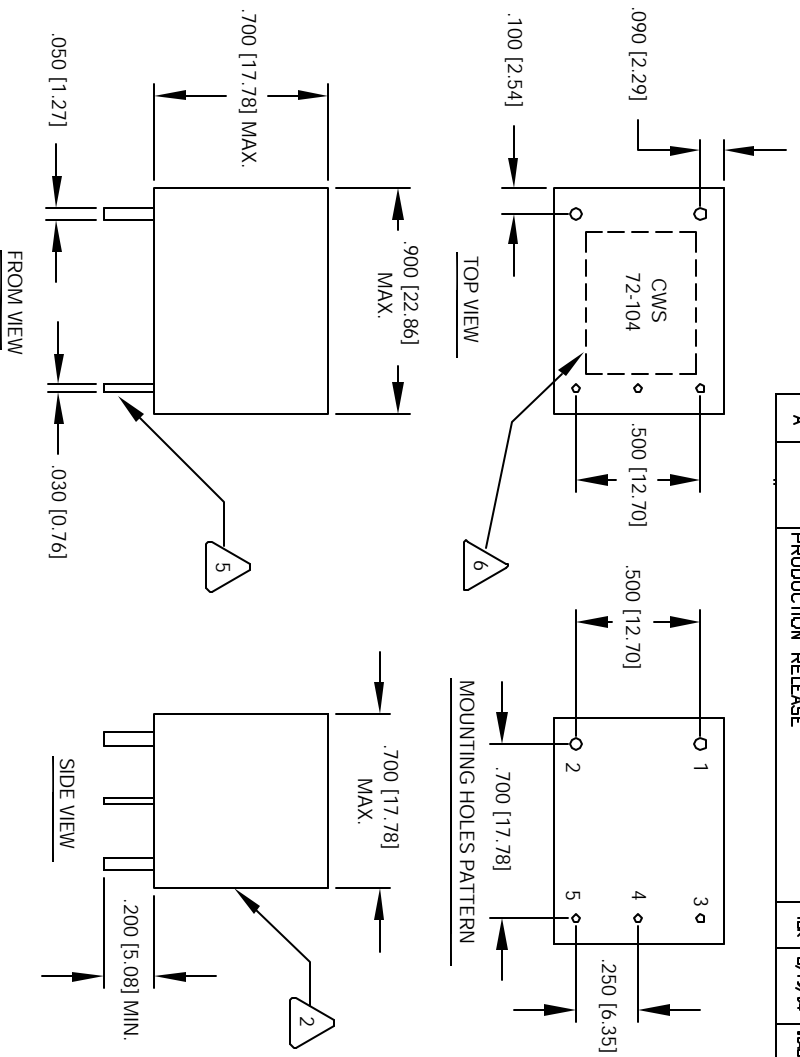
4 CONSTRUCTION: ENCAPSULATED USING BOBBIN.

- 3 SPECIFICATIONS @ 25 °C :
- FREQ. RANGE = 20 KHZ TO 200 KHZ
  - OPERATING TEMP. = - 25 °C TO 125 °C
  - HIPOT PRIMARY TO SECONDARY = 3750 Vrms
  - ONE TURN PRIMARY PEAK SENSE CURRENT = 20 A
  - PRIMARY BIPOLAR = 1800 AMPS-uSEC RATING MAX
  - PRIMARY UNIPOLAR = 900 AMPS-uSEC RATING MAX
  - SECONDARY RATED TERMINATING RESISTANCE = 300 OHMS NOMINAL
  - SECONDARY DCR = 11.0 OHMS MAX
  - SECONDARY INDUCTANCE TEST VOLTAGE @ 15.75 KHZ = 3.0 V
  - SECONDARY INDUCTANCE = 180.0 mH MIN
  - SECONDARY TURNS = 300

2 WIRE: UL RECOGNIZED 130 °C RATED MAGNET WIRE  
CWS BYTEMARK OR OTHER APPROVED PART  
CORE: FERRITE TOROID

BOBBIN RATING CLASS B (130 °C) REQUIRED  
1 MATERIAL: UL RECOGNIZED 94V-0 FOR FLAMMABILITY  
UNIT: INCHES [MM]

NOTES: UNLESS OTHERWISE SPECIFIED, CURRENT SENSOR.



UNLESS OTHERWISE SPECIFIED	DO NOT SCALE DRAWING
DRAWING AND TOLERANCE PER FIG 11.54M	
ALL DIMENSIONS ARE IN INCHES AND [MILLIMETERS]	
TOLERANCE RANGES	
XXXX ±.010 .XX ±.002	← - ±0.30°
XXXX ±.025 .XX ±.01	← - ±0.30°

QTY	CODE	MFG. P/N	DESCRIPTION	ITEM NO.
	IDENT			
	X			
PARTS LIST				
AUTOCAD SOLIDWORKS SIGN		CWS Coil Winding Specialist.		
DATE		1510 E. Edinger Ave.		
		Lmt. B. Santa Ana, CA. 92705		
TITLE: Current Sense Transformer				
DRAWN RFR		SIZE DIM. ML		
QDRD JLAU		B		
ENGR KSUM		SCALE 2=1		
APPR JLAU		SHEET 1 OF 1		
DATE 5/19/04		REV A		